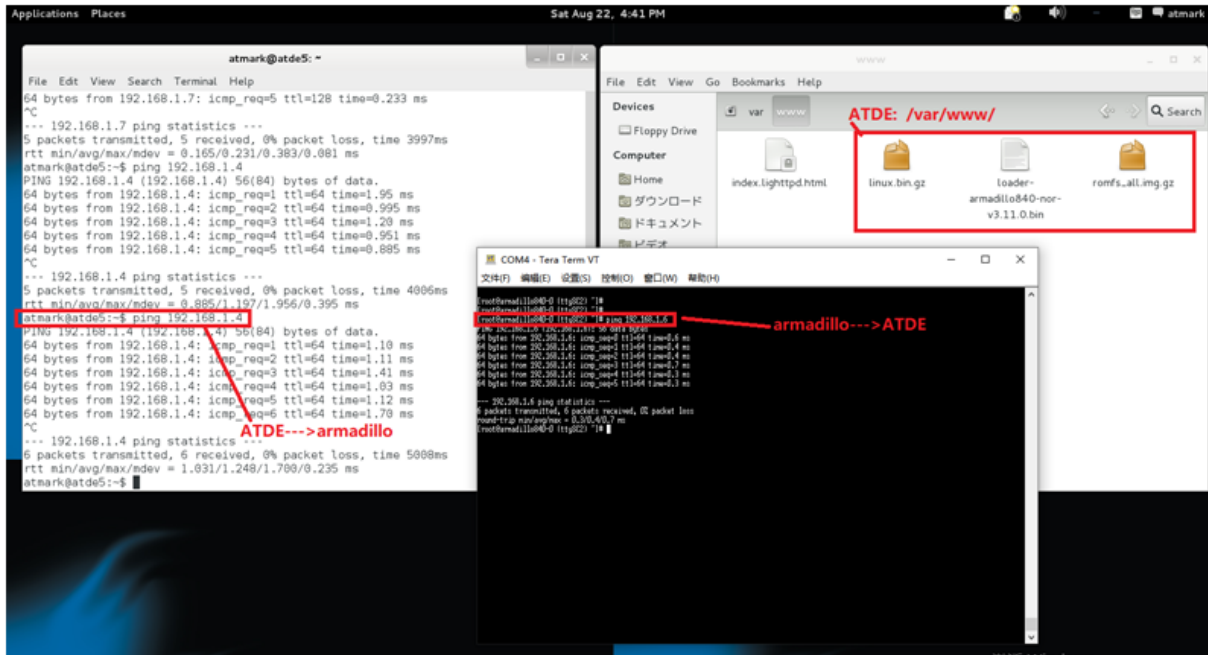


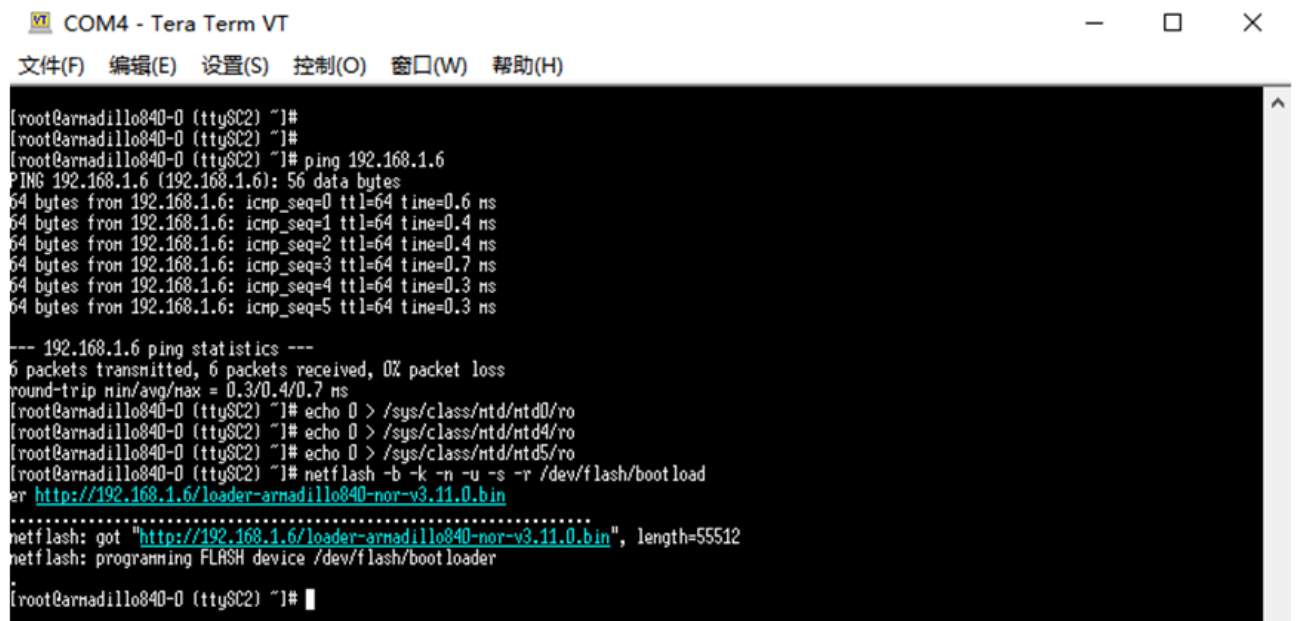
Armadillo への書き込みにつきまして、

下記0～9にてビルドしたイメージファイルを Armadillo 基板に書き込む時の状況を説明いたします。（画像の中の文字がよく見えないので、添付「UI システムを書き込む時の状況」フォルダーの中の画像をご参考ください。）

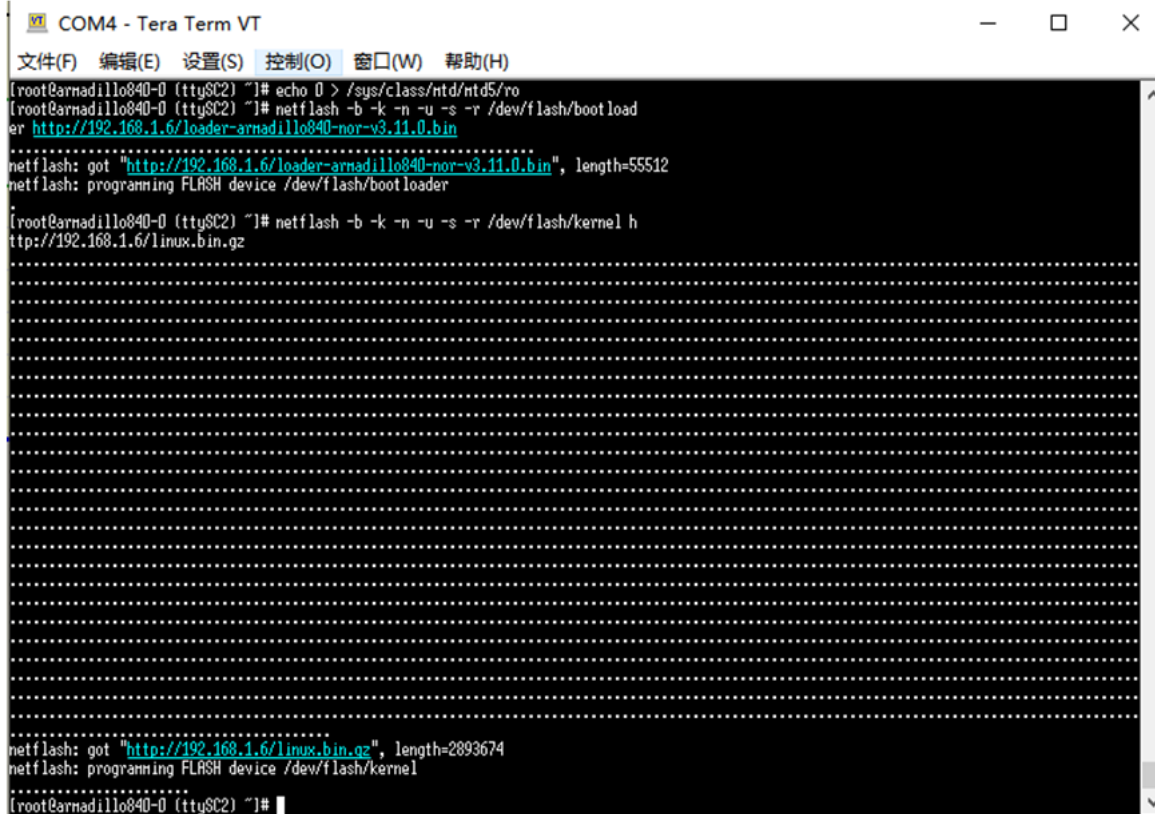
0. UI システムを書き込む前の準備。PC と Armadillo 基板との接続は問題ありません。



1. loader-armadillo840-nor-v3.11.0 を書き込む。

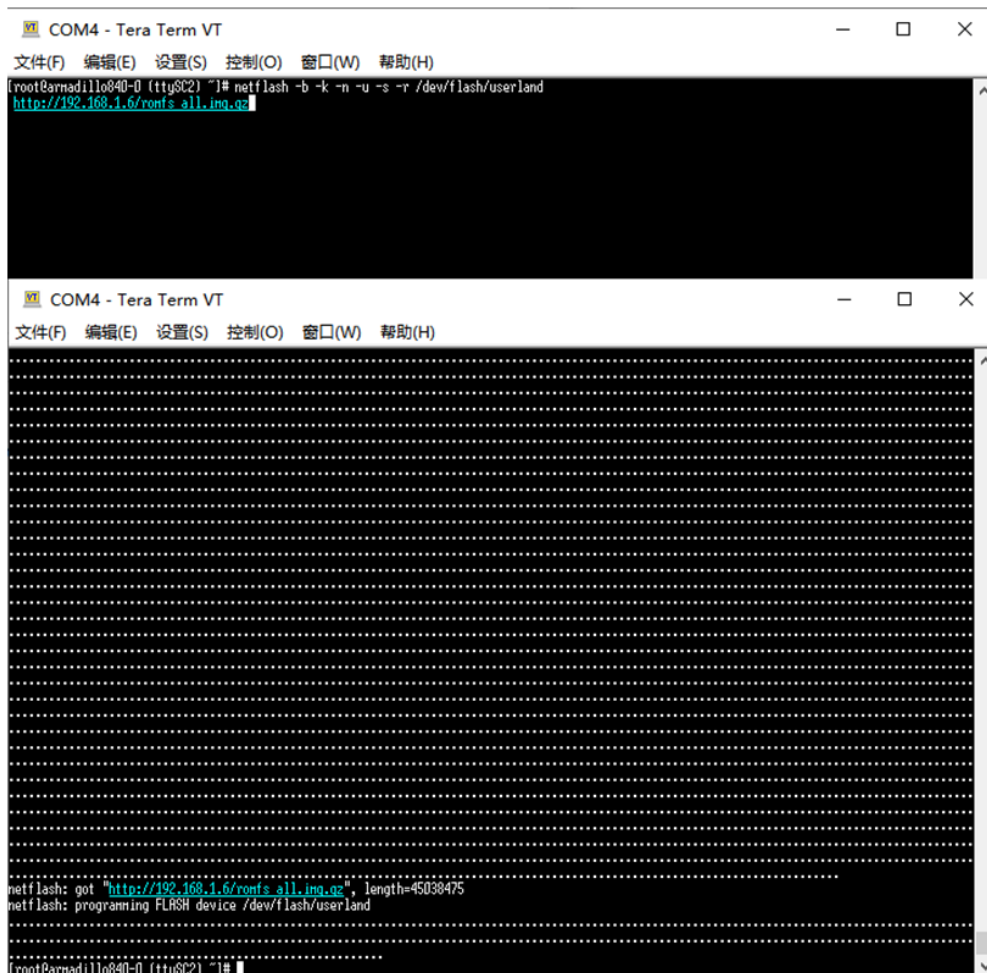


2. linux.bin.gz を書き込む。



```
COM4 - Tera Term VT
文件(F) 编辑(E) 设置(S) 控制(O) 窗口(W) 帮助(H)
[root@armadillo840-0 (ttySC2) ~]# echo 0 > /sys/class/mtd/mtd5/ro
[root@armadillo840-0 (ttySC2) ~]# netflash -b -k -n -u -s -r /dev/flash/bootload
er http://192.168.1.6/loader-armadillo840-nor-v3.11.0.bin
.....
netflash: got "http://192.168.1.6/loader-armadillo840-nor-v3.11.0.bin", length=55512
netflash: programming FLASH device /dev/flash/bootloader
.....
[root@armadillo840-0 (ttySC2) ~]# netflash -b -k -n -u -s -r /dev/flash/kernel h
ttp://192.168.1.6/linux.bin.gz
.....
netflash: got "http://192.168.1.6/linux.bin.gz", length=2893674
netflash: programming FLASH device /dev/flash/kernel
.....
[root@armadillo840-0 (ttySC2) ~]#
```

3. romfs_all.img.gz を書き込む。



```
COM4 - Tera Term VT
文件(F) 编辑(E) 设置(S) 控制(O) 窗口(W) 帮助(H)
[root@armadillo840-0 (ttySC2) ~]# netflash -b -k -n -u -s -r /dev/flash/userland
http://192.168.1.6/romfs_all.img.gz
.....
COM4 - Tera Term VT
文件(F) 编辑(E) 设置(S) 控制(O) 窗口(W) 帮助(H)
.....
netflash: got "http://192.168.1.6/romfs_all.img.gz", length=45038475
netflash: programming FLASH device /dev/flash/userland
.....
[root@armadillo840-0 (ttySC2) ~]#
```

4. rc.local の内容

通过终端软件在「/etc/config/rc.local」中进行编辑。
指令:「vi /etc/config/rc.local」
编辑内容如下

```
ip route add from 192.168.1.4 table 100 prio 100
ip route add dev eth0 src 192.168.1.4 table 100
ip route add from 192.168.1.5 table 200 prio 200
ip route add dev eth1 src 192.168.1.5 table 200
route del -net 192.168.1.0 netmask 255.255.255.0 dev eth0
route del -net 192.168.1.0 netmask 255.255.255.0 dev eth1
route add -net 192.168.1.2 netmask 255.255.255.255 dev eth0
route add -net 192.168.1.3 netmask 255.255.255.255 dev eth1

# for TSC-50
inputattach --always --daemon --baud 9600 --tsc /dev/ttySC0
export TSLIB_TSDEVICE=/dev/input/event1
export TSLIB_PLUGINDIR=/usr/lib/t50
export TSLIB_CALIBFILE=/etc/config/pointercal
export TSLIB_FBDEVICE=/dev/fb1

# for Demo
export QT_QPA_EGLFS_DISPLAY=1
export QT_QPA_EGLFS_WIDTH=1024
export QT_QPA_EGLFS_HEIGHT=768
mount -t jfs2 /dev/mtdblock6 /mnt
/mnt/DORAPro_1 -plugin tslib/dev/input/event1 &
/usr/bin/serial_ping 200 &

export TZ=JST-9
hwclock --hctosys --localtime
```

5. reboot した後の状況

完成编辑之后, 将编辑内容保存到Armadillo-840。
输入指令:「flatfsd -s」

```
[root@armadillo840-0 (ttySC2) ~]# flatfsd -s
flatfsd: saving fs to partition 1, tstamp=48
flatfsd: Wrote 44834 bytes to flash in 1 seconds
```

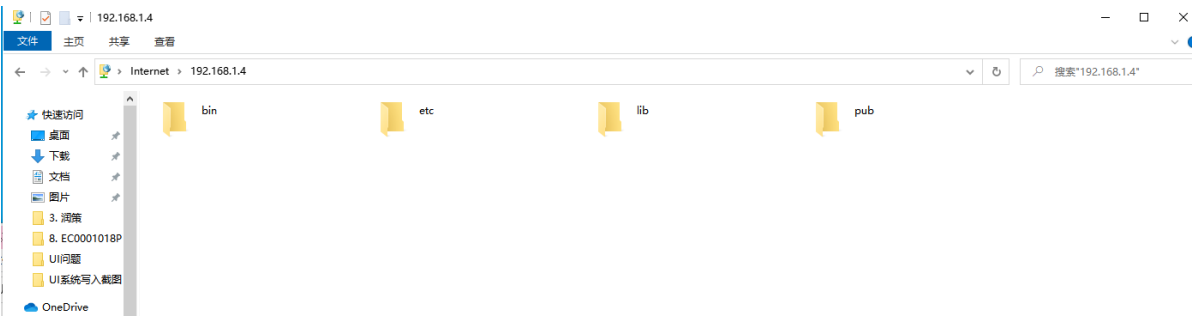
启动Armadillo-840, 若出现如下log, 说明已正常地完成启动。
※ 如果没有进行DORA UI image步骤,
log中会输出error, 请再次写入 image 文件并确认log。

```
inputattach: ignored device initialization failure
input: TSC-10/25/40 Serial TouchScreen as /devices/platform/sh-sci.0/tty/ttySC0/
serial0/input/input1
serial: Serial port ttySC0

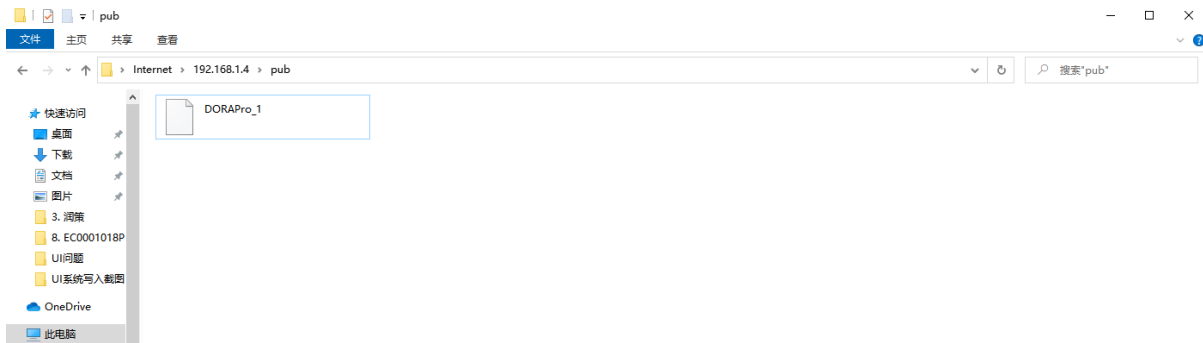
atmark-dist v1.51.0 (AtmarkTechno/Armadillo-840)
Linux 3.4-at20 (armv7l arch)

armadillo840-0 login: QTslibMouseHandler "tslib" "/dev/input/event1"
5/19/02/04 Ver 1.00.03
hello DORA!
```

6. FTP で Armadillo 基板と接続できます。



7. DORAPro_1 を armadillo の pub フォルダへコピーする。



8. DORAPro_1 を armadillo の pub フォルダへコピーし、再起動した後の状況。

```
[root@armadillo840-0 (ttySC2) ~]# killall DORAPro_1
cp /home/ftp/pub/DORAPro_1 /mnt/DORAPro_1
chmod 755 /mnt/DORAPro_1
reboot
killall: DORAPro_1: no process killed
[root@armadillo840-0 (ttySC2) ~]# cp /home/ftp/pub/DORAPro_1 /mnt/DORAPro_1
cp: can't stat '/home/ftp/pub/DORAPro_1': No such file or directory
[root@armadillo840-0 (ttySC2) ~]# chmod 755 /mnt/DORAPro_1
chmod: /mnt/DORAPro_1: No such file or directory
[root@armadillo840-0 (ttySC2) ~]# reboot
[root@armadillo840-0 (ttySC2) ~]#
System is going down for system reboot now.

Starting local stop scripts.
Syncing all fileystems: done
Unmounting all fileystems: umount: udev busy - remounted read-only done

The system is going down NOW!
Sent SIGTERM to all processes
Sent SIGKILL to all processes
Requesting system rebootRestarting system.
Hermi-It v3.11.0 (Armadillo-840/nor) compiled at 15:19:59, Feb 06 2019
Uncompressing kernel.....done.
Uncompressing ramdisk.....done.
```

```
Starting encoder firmware symlink: done
Setting hostname: done
Starting PWR Server: done
Starting basic firewall: done
Configuring network interfaces: net eth0: attached phy 0 to driver SMSC LAN8710/LAN8720 done
Starting inetd: done
Starting avahi-services: done
Starting avahi-daemon: done
Starting lighttpd: done
Starting sshd: failed
(sshd: you will be available to use after run '/etc/init.d/sshd keygen')

mark-dist v1.55.0 (AtmarkTechno/Armadillo-840)
linux 3.4-at26 [armv7l arch]

armadillo840-0 login: PHY: sh-eth-ffffff:00 - Link is Up - 100/Full

mark-dist v1.55.0 (AtmarkTechno/Armadillo-840)
linux 3.4-at26 [armv7l arch]

armadillo840-0 login:
mark-dist v1.55.0 (AtmarkTechno/Armadillo-840)
linux 3.4-at26 [armv7l arch]

armadillo840-0 login: guest
guest@armadillo840-0 (ttySC2) ~]# su
root@armadillo840-0 (ttySC2) ~]# cd /mnt
root@armadillo840-0 (ttySC2) /mnt]# ls
root@armadillo840-0 (ttySC2) /mnt]#
```

reboot した後、/mnt へコピーした DORAPro_1 がなくなった。

9. 手動でDORAPro_1をmntへコピーする。

```
COM4 - Tera Term VT
root@amadi110840-0 (ttyS2) ~/# cp /home/ftp/pub/DORAPro_1 /mnt/DORAPro_1
root@amadi110840-0 (ttyS2) ~/# cd /mnt
root@amadi110840-0 (ttyS2) /mnt# ls
DORAPro_1
root@amadi110840-0 (ttyS2) /mnt# chmod 755 /mnt/DORAPro_1
root@amadi110840-0 (ttyS2) /mnt# ls
DORAPro_1
root@amadi110840-0 (ttyS2) /mnt# reboot

COM4 - Tera Term VT
Mounting usbfs: done
Mounting sfsfs: done
Mounting tmpfs on /dev: done
Cleaning up system: done
Running local start scripts. done
Creating mtd devices: done
Loading /etc/conf.d: done
Starting udevd: done
Mounting drppts: done
Changing file permissions: done
Configure /home/ftp: done
Starting klogd: done
Mounting firmware on /opt/firmware: done
Mounting license on /opt/licenses: done
Mounting tmpfs on /tmp, /var/tmp: done
Mounting rants on /home/ftp/pub: done
Creating decoder firmware symlink: done
Creating encoder firmware symlink: done
Setting hostname: done
Starting PRR Server: done
Starting basic firewall: done
Configuring network interfaces: net eth0: attached phy 0 to driver SHSC LAN8710/LAN8720 done
Starting inetd: done
Creating sshd.services: done
Starting sshd.demon: done
Starting lighttpd: done
Starting sshd: failed
(sshd: you will be available to use after run '/etc/init.d/sshd keygen')
atnark-dist v1.55.0 (RtnarkTechno/amadi110-840)
Linux 3.4-rt26 (armv7l arch)
amadi110840-0 login: PWR: sh-eth-ffffffffff:00 - Link is Up - 100/Full
atnark-dist v1.55.0 (RtnarkTechno/amadi110-840)
Linux 3.4-rt26 (armv7l arch)
amadi110840-0 login:
atnark-dist v1.55.0 (RtnarkTechno/amadi110-840)
Linux 3.4-rt26 (armv7l arch)
amadi110840-0 login: guest
guest@amadi110840-0 (ttyS2) ~/# su
root@amadi110840-0 (ttyS2) ~/# cd /mnt
root@amadi110840-0 (ttyS2) /mnt# ls
root@amadi110840-0 (ttyS2) /mnt#
```

1. 手動で/mntへDORAPro_1をコピーし、/mntにDORAPro_1があることを確認した。

2. 再起動した後、再度/mntにDORAPro_1があるかを確認した結果、DORAPro_1がなくなった。