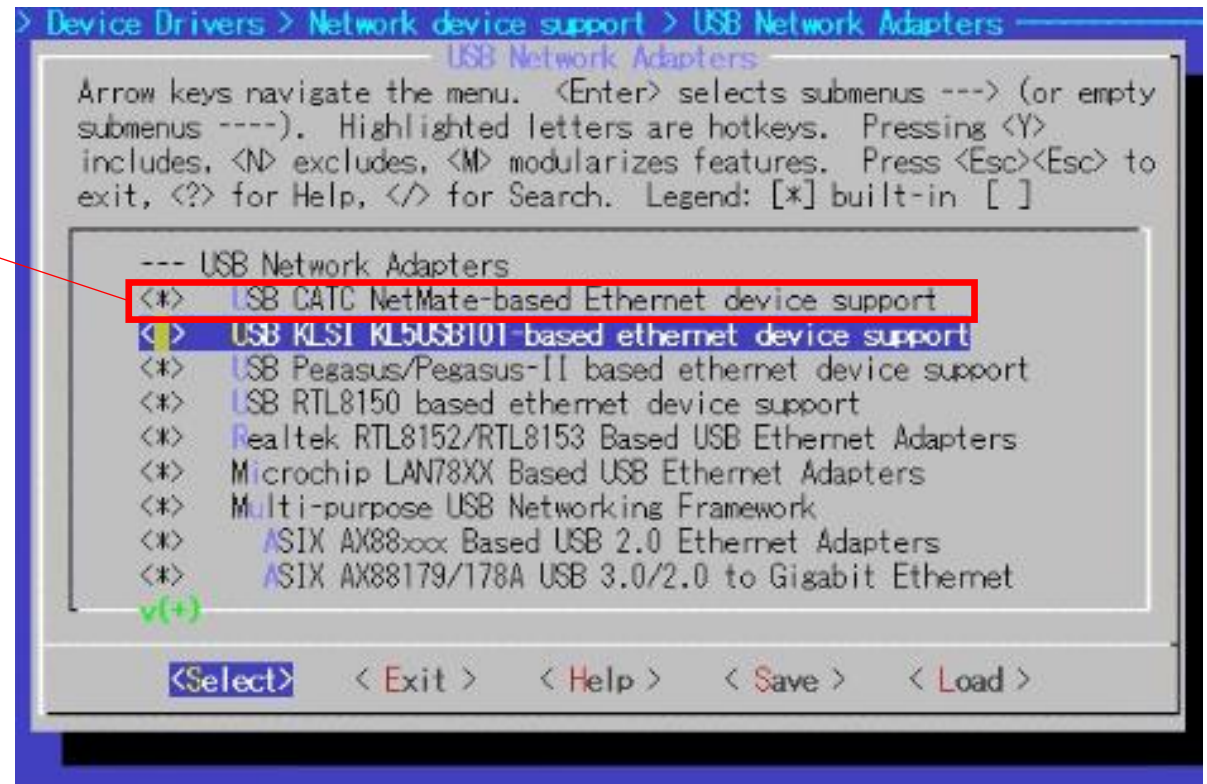


- CONFIG_USB_CATC
- CONFIG_USB_HSO
- CONFIG_USB_KAWETH
- CONFIG_USB_NET_RNDIS_HOST
- CONFIG_USB_PEGASUS
- CONFIG_USB_RTL8150
- CONFIG_USB_USBNET
- CONFIG_USB_ZD1201



```

Search Results
-----
Symbol: USB_CATC [=y]
Type : tristate
Defined at drivers/net/usb/Kconfig:15
Prompt: USB CATC NetMate-based Ethernet device support
Depends on: NETDEVICES [=y] && USB_NET_DRIVERS [=y]
Location:
-> Device Drivers
-> Network device support (NETDEVICES [=y])
(1) -> USB Network Adapters (USB_NET_DRIVERS [=y])
Selects: CRC32 [=y]

```

- CONFIG_USB_CATC
- CONFIG_USB_HSO
- CONFIG_USB_KAWETH
- CONFIG_USB_NET_RNDIS_HOST
- CONFIG_USB_PEGASUS
- CONFIG_USB_RTL8150
- CONFIG_USB_USBNET
- CONFIG_USB_ZD1201

```
<*) C onexant CX82310 USB ethernet port
<*) S amsung Kalmia based LTE USB modem
<*) Q MI WWAN driver for Qualcomm MSM based 3G and LTE modems
<*) Option USB High Speed Mobile Devices
<*) I ntelton PLC based usb adapter
<*) A pple iPhone USB Ethernet driver
<*) U SB-to-WWAN Driver for Sierra Wireless modems
<*) L G VL600 modem dongle
<*) Q ingHeng CH9200 USB ethernet support
<*) A quantia AQtion USB to 5/2.5GbE Controllers support
```

```
Search Results
Symbol: USB_HSO [=y]
Type : tristate
Defined at drivers/net/usb/Kconfig:551
  Prompt: Option USB High Speed Mobile Devices
  Depends on: NETDEVICES [=y] && USB_NET_DRIVERS [=y] && USB [=y] && RF
  Location:
    -> Device Drivers
      -> Network device support (NETDEVICES [=y])
(1)  -> USB Network Adapters (USB_NET_DRIVERS [=y])

(100%)
< Exit >
```

- CONFIG_USB_CATC
- CONFIG_USB_HSO
- CONFIG_USB_KAWETH
- CONFIG_USB_NET_RNDIS_HOST
- CONFIG_USB_PEGASUS
- CONFIG_USB_RTL8150
- CONFIG_USB_USBNET
- CONFIG_USB_ZD1201

```

DEVICE DRIVERS > NETWORK DEVICE SUPPORT > USB NETWORK ADAPTERS
USB Network Adapters
Arrow keys navigate the menu. <Enter> selects submenus ---> (or empty
submenus ----). Highlighted letters are hotkeys. Pressing <Y>
includes, <N> excludes, <M> modularizes features. Press <Esc><Esc> to
exit, <?> for Help, </> for Search. Legend: [*] built-in [ ]

--- USB Network Adapters
<*> USB CATC NetMate-based Ethernet device support
[*>] USB KLSI KL5USB101-based ethernet device support
<*> USB Pegasus/Pegasus-II based ethernet device support
<*> USB RTL8150 based ethernet device support
<*> Realtek RTL8152/RTL8153 Based USB Ethernet Adapters
<*> Microchip LAN78XX Based USB Ethernet Adapters
<*> Multi-purpose USB Networking Framework
<*> ASIX AX88xxx Based USB 2.0 Ethernet Adapters
<*> ASIX AX88179/178A USB 3.0/2.0 to Gigabit Ethernet
v(+)

```

```

Symbol: USB_KAWETH [=y]
Type : tristate
Defined at drivers/net/usb/Kconfig:34
Prompt: USB KLSI KL5USB101-based ethernet device support
Depends on: NETDEVICES [=y] && USB_NET_DRIVERS [=y]
Location:
-> Device Drivers
  -> Network device support (NETDEVICES [=y])
(1)  -> USB Network Adapters (USB_NET_DRIVERS [=y])

```

- CONFIG_USB_CATC
- CONFIG_USB_HSO
- CONFIG_USB_KAWETH
- CONFIG_USB_NET_RNDIS_HOST
- CONFIG_USB_PEGASUS
- CONFIG_USB_RTL8150
- CONFIG_USB_USBNET
- CONFIG_USB_ZD1201

Arrow keys navigate the menu. <Enter> selects submenus ---> (or empty submenus ----). Highlighted letters are hotkeys. Pressing <Y> includes, <N> excludes, <M> modularizes features. Press <Esc><Esc> to exit, <?> for Help, </> for Search. Legend: [*] built-in []

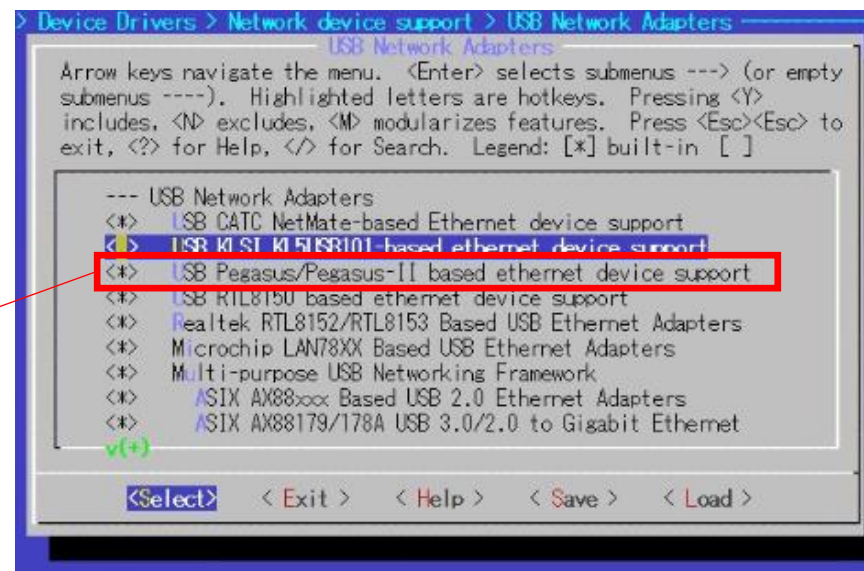
```

(-)
< > CoreChip-sz SR9700 based USB 1.1 10/100 ethernet devices
<[*] CoreChip-sz SR9800 based USB 2.0 10/100 ethernet devices
<[*] SMSC LAN75XX based USB 2.0 gigabit ethernet devices
<[*] SMSC LAN95XX based USB 2.0 10/100 ethernet devices
< > GeneSys GL620USB-A based cables
<[*] NetChip 1080 based cables (Laplirk, ...)
<[*] Prolific PL-2301/2302/25A1/27A1 based cables
<[*] MosChip MCS7830 based Ethernet adapters
<[*] Host for RNDIS and ActiveSync devices
<[*] Simple USB Network Links (CDC Ethernet subset)
v(+)
```

```

Search Results
Symbol: USB_NET_RNDIS_HOST [=y]
Type : tristate
Defined at drivers/net/usb/Kconfig:398
Prompt: Host for RNDIS and ActiveSync devices
Depends on: NETDEVICES [=y] && USB_NET_DRIVERS [=y] && USB_USBNET [=y]
Location:
-> Device Drivers
    -> Network device support (NETDEVICES [=y])
        -> USB Network Adapters (USB_NET_DRIVERS [=y])
            (1) -> Multi-purpose USB Networking Framework (USB_USBNET [=y])
Selects: USB_NET_CDCETHER [=y]
Selected by [n]:
- USB_NET_RNDIS_WLAN [=n] && NETDEVICES [=y] && WLAN [=y] && USB [=y]
```

- CONFIG_USB_CATC
- CONFIG_USB_HSO
- CONFIG_USB_KAWETH
- CONFIG_USB_NET_RNDIS_HOST
- **CONFIG_USB_PEGASUS**
- CONFIG_USB_RTL8150
- CONFIG_USB_USBNET
- CONFIG_USB_ZD1201

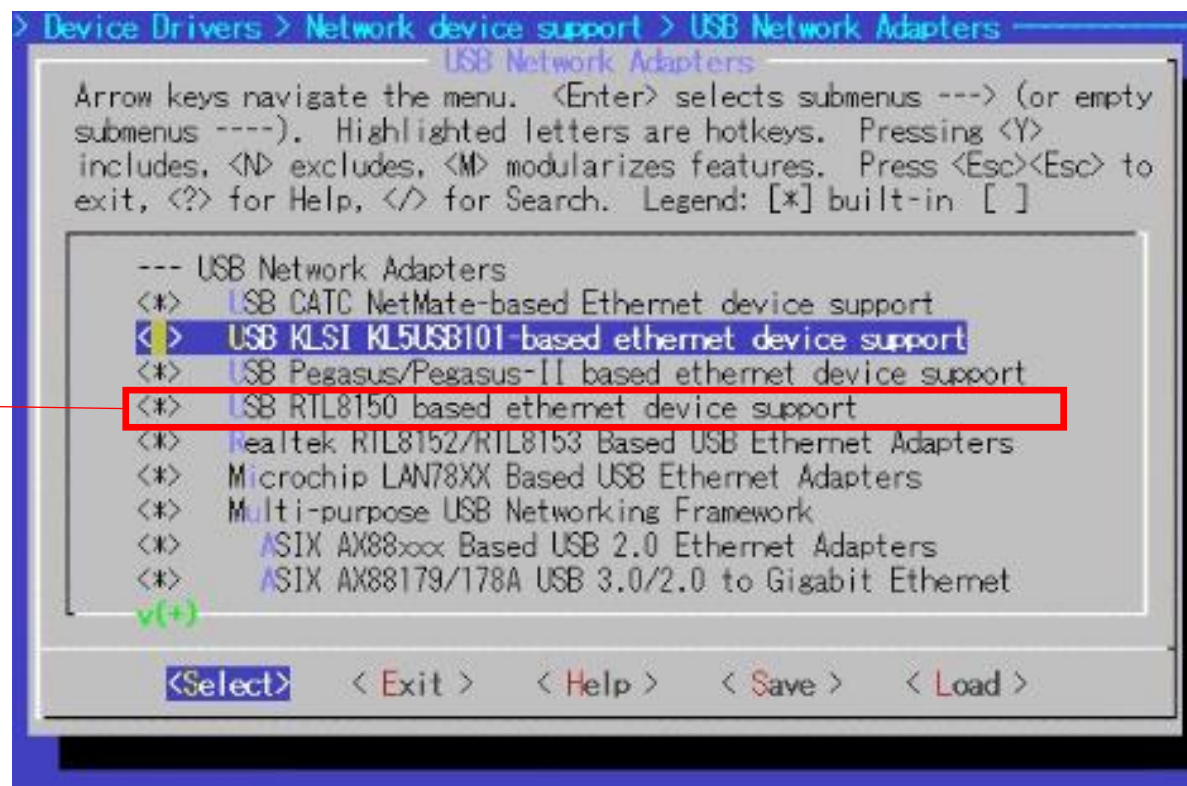


```

Search Results
Symbol: USB_PEGASUS [=y]
Type : tristate
Defined at drivers/net/usb/Kconfig:73
Prompt: USB Pegasus/Pegasus-II based ethernet device support
Depends on: NETDEVICES [=y] && USB_NET_DRIVERS [=y]
Location:
-> Device Drivers
-> Network device support (NETDEVICES [=y])
(1) -> USB Network Adapters (USB_NET_DRIVERS [=y])
Selects: MII [=y]

```

- CONFIG_USB_CATC
- CONFIG_USB_HSO
- CONFIG_USB_KAWETH
- CONFIG_USB_NET_RNDIS_HOST
- CONFIG_USB_PEGASUS
- CONFIG_USB_RTL8150
- CONFIG_USB_USBNET
- CONFIG_USB_ZD1201



```

Search Results
Symbol: USB_RTL8150 [=y]
Type : tristate
Defined at drivers/net/usb/Kconfig:88
Prompt: USB RTL8150 based ethernet device support
Depends on: NETDEVICES [=y] && USB_NET_DRIVERS [=y]
Location:
-> Device Drivers
-> Network device support (NETDEVICES [=y])
(1) -> USB Network Adapters (USB_NET_DRIVERS [=y])
Selects: MII [=y]
```

- CONFIG_USB_CATC
- CONFIG_USB_HSO
- CONFIG_USB_KAWETH
- CONFIG_USB_NET_RNDIS_HOST
- CONFIG_USB_PEGASUS
- CONFIG_USB_RTL8150
- CONFIG_USB_USBNET
- CONFIG_USB_ZD1201

```

USB Network Adapters
Arrow keys navigate the menu. <Enter> selects submenus ---> (or empty
submenus ----). Highlighted letters are hotkeys. Pressing <Y>
includes, <N> excludes, <M> modularizes features. Press <Esc><Esc> to
exit, <?> for Help, </> for Search. Legend: [*] built-in [ ]
^(-)
<[*] USB Pegasus/Pegasus-II based ethernet device support
<[*] USB RTL8150 based ethernet device support
<[*] Realtek RTL8152/RTL8153 Based USB Ethernet Adapters
<[*] Microchip LAN78XX Based USB Ethernet Adapters
<[*] Multi-purpose USB Networking Framework
<[*] ASIX AX88xxx Based USB 2.0 Ethernet Adapters
<[*] ASIX AX88179/178A USB 3.0/2.0 to Gigabit Ethernet
-* CDC Ethernet support (smart devices such as cable modems)
<[*] CDC EEM support
-* CDC NCM support
v(+)
```

```

Search Results
Symbol: USB_USBNET [=y]
Type : tristate
Defined at drivers/net/usb/Kconfig:133
Prompt: Multi-purpose USB Networking Framework
Depends on: NETDEVICES [=y] && USB_NET_DRIVERS [=y]
Location:
-> Device Drivers
-> Network device support (NETDEVICES [=y])
(1) -> USB Network Adapters (USB_NET_DRIVERS [=y])
Selects: MII [=y]
Selected by [n]:
- USB_NET_RNDIS_WLAN [=n] && NETDEVICES [=y] && WLAN [=y] && USB [=y]
```

CONFIG_USB_ZD1201を「*」でビルドするために「CFG80211」を「M」→「*」に変更する

```
module will be called zd1201.

Symbol: USB_ZD1201 [=n]
Type : tristate
Defined at drivers/net/wireless/zydass/Kconfig:15
  Prompt: USB ZD1201 based Wireless device support
  Depends on: NETDEVICES [=y] && WLAN [=y] && WLAN_VENDOR_ZYDAS [=y]¥
  && CFG80211 [=m] && USB [=y]
  Location:
    -> Device Drivers
      -> Network device support (NETDEVICES [=y])
        -> Wireless LAN (WLAN [=y])
          -> ZyDAS devices (WLAN_VENDOR_ZYDAS [=y])
  Selects: WIRELESS_EXT [=y] && WEXT_PRIV [=y] && FW_LOADER [=y]

(100%)
< Exit >
```

```
Wireless
Arrow keys navigate the menu. <Enter> selects submenus ---> (or empty
submenus ----). Highlighted letters are hotkeys. Pressing <Y>
includes <M> excludes, <M> modularizes features. Press <Esc><Esc> to
ex M -> *
-- Wireless
< * > cfg80211 - wireless configuration API
[ * ] nl80211 testmode command
[ ] enable developer warnings
[ ] cfg80211 certification onus
[ * ] enable powersave by default
[ * ] support CRDA
[ * ] cfg80211 wireless extensions compatibility
[ ] lib80211 debugging messages
< M > Generic IEEE 802.11 Networking Stack (mac80211)
v(+)
```

< Select > < Exit > < Help > < Save > < Load >

```
Search results
Symbol: CFG80211 [=m]
Type : tristate
Defined at net/wireless/Kconfig:20
  Prompt: cfg80211 - wireless configuration API
  Depends on: NET [=y] && WIRELESS [=y] && (RFKILL [=y] || !RFKILL [=y])
  Location:
    -> Networking support (NET [=y])
  (1) -> Wireless (WIRELESS [=y])
  Selects: FW_LOADER [=y] && CRC32 [=y] && CRYPTO_SHA256 [=y]
```


- CONFIG_USB_CATC
- CONFIG_USB_HSO
- CONFIG_USB_KAWETH
- CONFIG_USB_NET_RNDIS_HOST
- CONFIG_USB_PEGASUS
- CONFIG_USB_RTL8150
- CONFIG_USB_USBNET
- CONFIG_USB_ZD1201

```

Wireless LAN
Arrow keys navigate the menu. <Enter> selects submenus ---> (or empty
submenus ----). Highlighted letters are hotkeys. Pressing <Y>
includes, <N> excludes, <M> modularizes features. Press <Esc><Esc> to
exit, <?> for Help, </> for Search. Legend: [*] built-in [ ]
^(-)
< > TI wlcore support
[*] ZyDAS devices
<*> USB ZD1201 based Wireless device support
< > ZyDAS ZD1211/ZD1211B USB-wireless support
[*] Quantenna wireless cards support
< > Quantenna QSR1000/QSR2000/QSR10g PCIe support
[ ] Armadillo-WLAN(AWL13)
< > Simulated radio testing tool for mac80211
<*> Wireless RNDIS USB support
< > Wifi wrapper for ethernet drivers

<Select> < Exit > < Help > < Save > < Load >

```

```

Search Results
Symbol: USB_ZD1201 [=y]
Type : tristate
Defined at drivers/net/wireless/zydaskconfig:15
Prompt: USB ZD1201 based Wireless device support
Depends on: NETDEVICES [=y] && WLAN [=y] && WLAN_VENDOR_ZYDAS [=y] &&
Location:
-> Device Drivers
-> Network device support (NETDEVICES [=y])
-> Wireless LAN (WLAN [=y])
(1) -> ZyDAS devices (WLAN_VENDOR_ZYDAS [=y])
Selects: WIRELESS_EXT [=y] && WEXT_PRIV [=y] && FW_LOADER [=y]

```